



DIVINA

cork floors

BE PERFECT. BE NATURAL

CORK	03
DIVINA CORK FLOORS	04
C SERIES	06
Glued cork floors	
C SERIES	08
Floating cork floors	
W SERIES	16
Floating wood floors	
V SERIES	22
Floating Vinyl floors	
D SERIES	26
Floating digital floors	
UNDERLAYS	31
CLEANING	31
INSTALLATION	
Glued floors	32
Floating floors	33
WARRANTY	34
TECHNICAL DATASHEET	35

CORK, NATURAL PRODUCT

Cork is a unique raw material that respects a culture of sustainability from its origin to the hands of the consumer.

As the bark of the cork oak (Quercus Suber L), it is removed from the tree every 9 years in a process called debarking, which is essential to the tree's healthy growth.

With unique qualities, this raw material lends itself to a broad range of uses, among them flooring, making it distinctively unique:



**CORK IS 100% NATURAL,
RECYCLABLE AND RENEWABLE,
AND IS THUS POPULAR,
PARTICULARLY IN DECORATION ,
AND ARCHITECTURE.**

Particularly ecological, cork floors are composed of cork not used by the cork stopper industry and other by-products, which are transformed into granulated and agglomerated cork.



Divina Cork Floors a high-quality brand of cork floors recognized for its beauty, elegance and suitability for the widest variety of environments, from the most classical to the most contemporary.

It maximizes the benefits and ecological characteristics of cork, raising floors to a higher level of comfort and pleasure:

- Thermal comfort for the feet
- Comfortable for back and legs
- Decrease stress on joints
- Anti-bacterial and hygienic, recommended for people with allergies
- Easy to clean and maintain

Other features make Divina Cork Floors popular solutions for today's buildings:

- Natural and renewable
- They ensure thermal insulation, saving on energy costs
- They absorb sound, ensuring excellent sound insulation
- They are resilient, returning to their original form after pressure
- They are slip-resistant
- They are resistant to wear
- They are anti-static

This brand of flooring and coverings is a Premium range belonging to Sedacor of the JPS Cork Group, one of the world's largest cork producers, which has been operating since 1924.

Combining tradition and expertise with innovation and technology, the Group companies offer superior quality cork floors. They also offer a range of complementary cork products for architecture and construction.

CORK, WOOD, VINYL AND DIGITAL.

Structured on a cork base, which gives them the nobility and unique advantages of this raw material, Divina Cork Floors are produced in a range of appearances that offer beauty to spaces and provide the diversity essential to the best decoration projects.

Divina Cork Floors includes the C Series and W Series, with natural cork and wood patterns, respectively, which are available in many different types of finish.

In response to the demands of spaces with higher traffic, Divina Cork Floors suggests the V Series, which reproduces the patterns of wood and stone naturally and with the resistance of vinyl.

The D Series is a range with the versatility of digital printing, allowing customization tailored to the customer, from complete original patterns to the mere insertion of a logo.

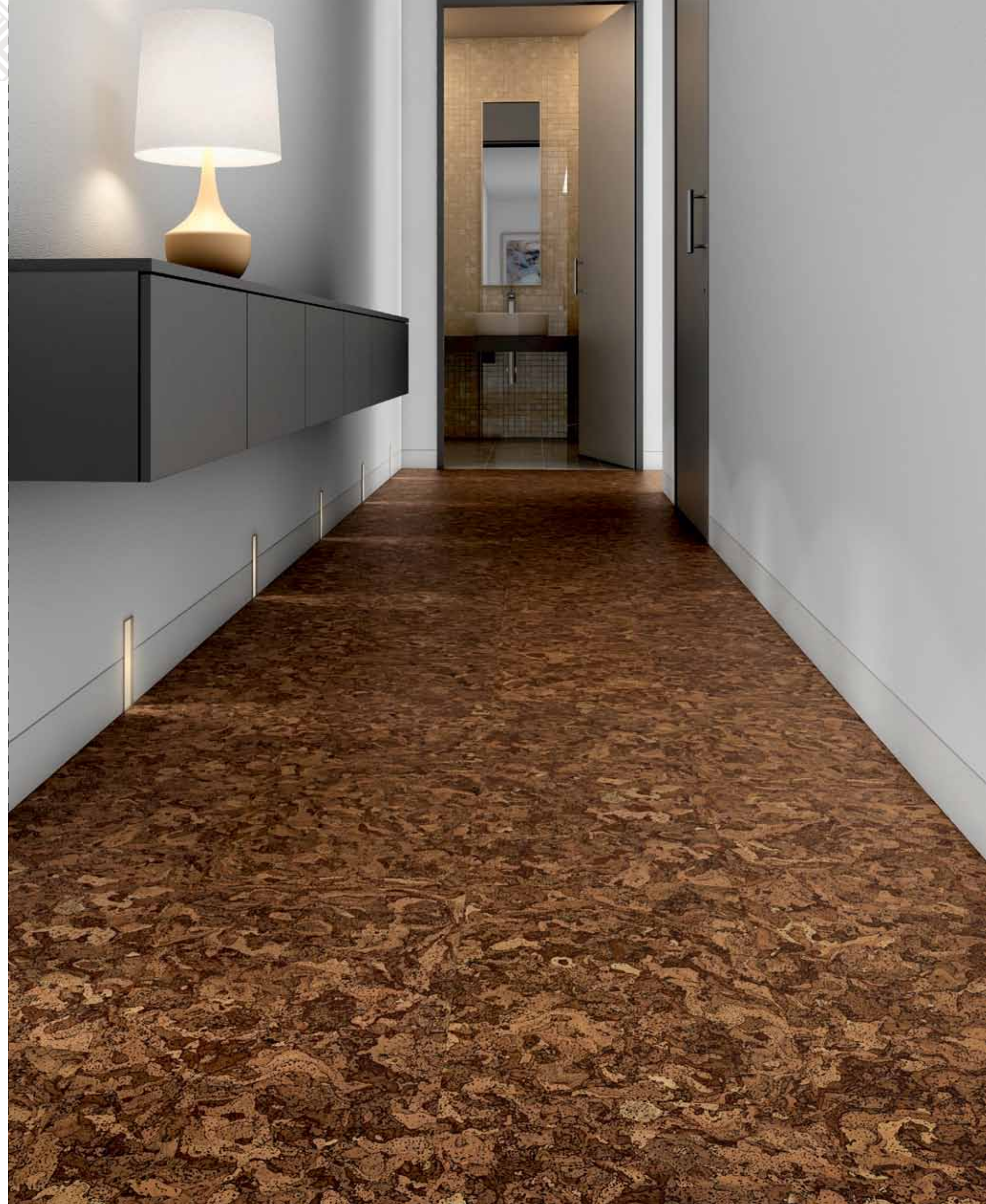
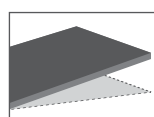


CORK SERIES

Glued down Divina Cork Floors are the answer for those seeking a natural, cosy and comfortable appearance for long-term use.

With versions in compact cork with varied granules, or a fancy cork surface, these floors are an expression of serenity and harmony.

With various finishing options, they are the answer for spaces decorated in many different ways.



CORK SERIES

To quickly install Divina Cork Floors, even over pre-existing floor, the floating floors range is the solution. With a structure that includes a cork layer, Divina Cork Floors floating range provides superior thermal and acoustic insulation, not requiring the use of underlays.



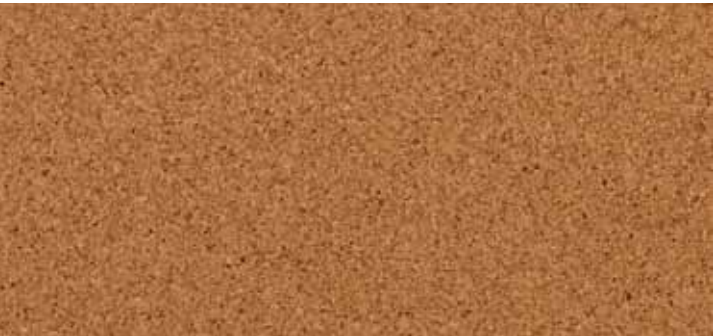
CORK IN ALL ENVIRONMENTS

With creativity and good taste, the appearance of natural cork adapts itself to all kinds of environments, from home for work or leisure to professional environments. The result is original and especially cosy spaces.



CORK SAMPLES

The originality of nature and human ingenuity bring you a set of glued and floating cork styles that, when well integrated, stand out in any décor.



Agate



Diamond



Pyrite



Ruby



Amber



Emerald



Jade



Sapphire



Amethyst



Onyx



Moonstone



Topaz



Aquamarine



Pearl



Opal



Turquoise

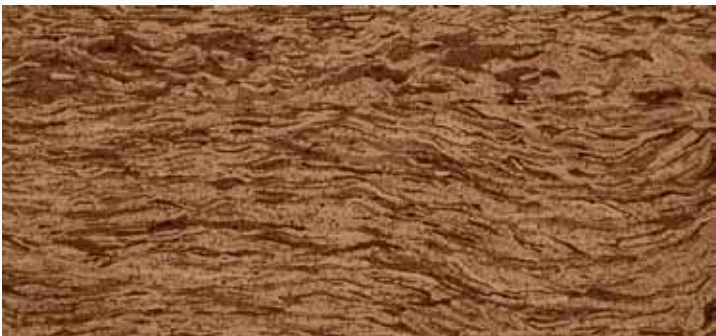
CORK SAMPLES



Quartz



Obsidian



Tanzanite



Jasper



Beryl



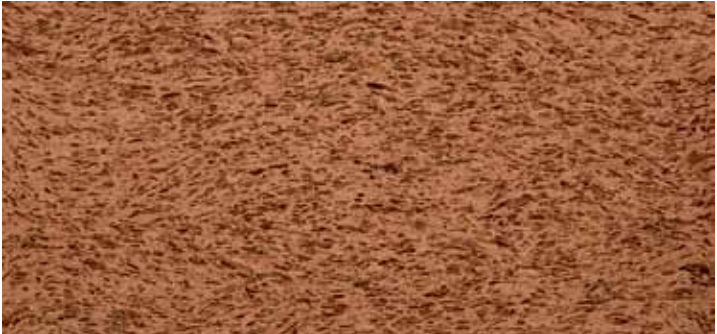
Bloodstone



Zircon



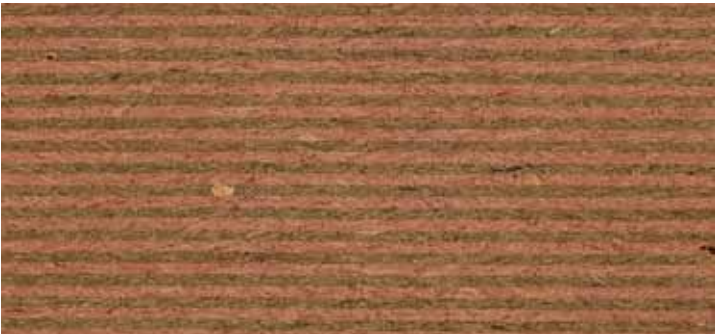
Lapis Lazuli



Coral



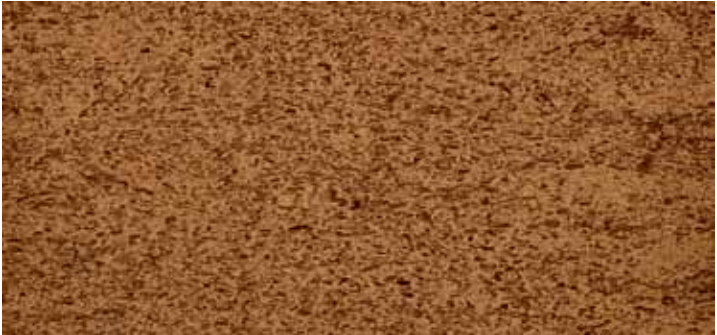
Serpentine



Larimar



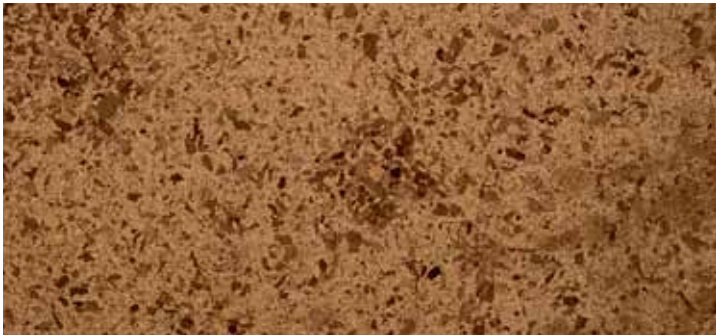
Tourmaline



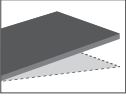

Sodalite




Sunstone



Titanite



300x300x6mm
600x300x6mm
600x450x6mm



1235x300x11mm

WOOD SERIES

The variety and nobility of wood always guarantee elegant and distinctive environments. Floating wood floors have the advantage of speed of installation thanks to its fitting system and use of existing floor surface. In addition to these advantages, Divina Cork Floors floating wood floors offer a cork structural base that does away with underlays and transforms a floating floor into a quieter and more comfortable floor for your back and joints.



THE VERSATILITY OF WOOD

In spaces as diverse as a home office or a hotel room, the appearance of wood with a cork structure fits any décor, beautifully and flexibly.

Divina Cork Floors Wood Series floating floors, with their veneer of natural wood just 0.60mm thick, allows you to enjoy a noble and genuine appearance with minimal environmental impact. Natural patterns that become more ecological due to limited use of timber resources



WOOD SAMPLES

The most sought after woods are found in the Divina Cork Floors range, allowing decorators' good taste to be better integrated at home, in offices and in hotels. A selection of easy to install, stable and durable woods.



Cherry



Mahogany



Walnut



Red Oak



Steamed Beech



Sucupira



Wenge



Zebrano



Maple



Teak



European Oak



Ebony

V VINYL SERIES

An original appearance, replicating stone or wood, which brings the resilience and durability of vinyl. In the floating floor version, this solution is quick to install, thanks to its system of fitting between planks, and may be applied on top of existing floor surfaces. Divina Cork Floors floating vinyl floors offer the huge advantage that only a cork base can give: greater soundproofing, thermal insulation and comfort.

Vinyl being an extremely tough, durable and low maintenance material, its environmental impact is almost null.



VINYL SAMPLES

With the protection against wear characteristic of vinyl, and dispensing with underlay thanks to its cork base, the Divina Cork Floors V Series offers a range of appearances that naturally reproduce stone and wood.



1250x225x11mm
610x470x11mm



Pineapple



Cava-Cava



Absinthe



Eucalyptus



Burdock



Fennel



Guarana



Blueberry



Mint



Soy



Lemon balm



Linden



Peppermint



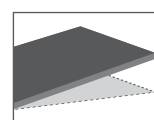
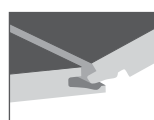
Thyme

D DIGITAL SERIES

Pure fantasy is what Divina Cork Floors D Series offers.

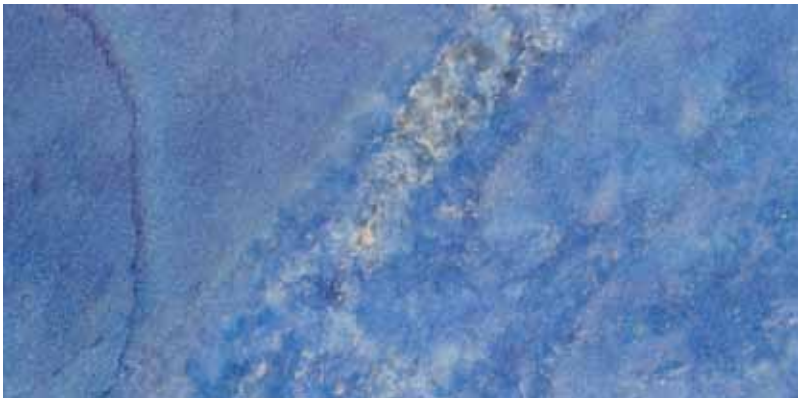
With a cork base that provides unique comfort and soundproofing in floating or glued versions, the D Series also offers full tailored customization.

From the complexity of a new pattern, the reproduction of a photograph to the simplicity of incorporating a logo into an existing pattern, the D Series gives vent to the creativity of the decorator, allowing originality in every type of environment.



DIGITAL SAMPLES

Without recourse to underlays, glued or applied with the ease of the fitting system using planks of floating floors, Divina Cork Floors D Series floors are all that the imagination can conceive. These are just some examples of original customization.



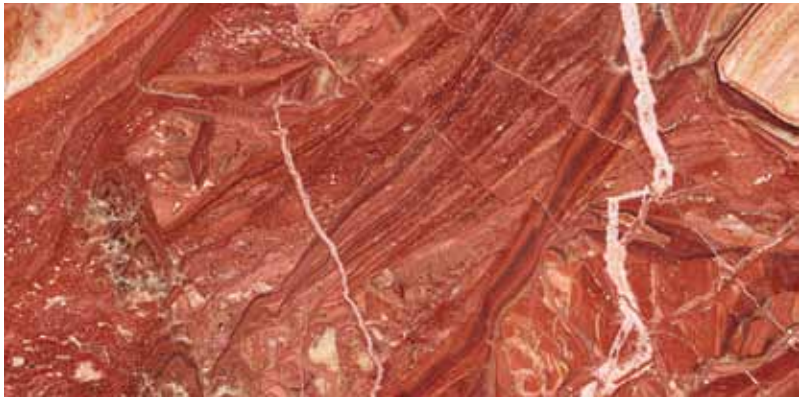
D_Stone Blue



D_Stone Cream



D_Stone Multicolor



D_Stone Granate



D_Stone Black



D_Stone Brown



D_Stone Green



D_Red Oak



D_Walnut



D_Cherry



D_Ebony



D_Teak



D_Zebrano



D_Wenge

ACCESSORIES

UNDERLAYS	31
MAINTENANCE AND CLEANING	31
INSTALLATION	
Glued floors	32
Floating floors	33
WARRANTY	34
TECHNICAL DATASHEET	35

UNDERLAYS



Cork underlays provide other kinds of floors, such as floating wooden floors, laminated floors, etc. with extra thermal and acoustic comfort. Available in various sizes, thicknesses and densities, they are suitable for various types of use. Being made of cork, a natural, ecological and sustainable raw material, they are environmentally friendly, odourless, rot-proof, anti-allergic and healthy products.

MAINTENANCE AND CLEANING

PREVENTIVE CARE

- The floor should be installed last when undertaking works.
- If other works have to be executed after the floor is installed, protect it with sheets of cardboard.
- Do not drag furniture across the floor.
- Use felt on the feet of chairs and furniture.
- The wheels of castor chairs must comply with the DIN 68131 (Type W1) standard.
- For added protection, use a suitable mat under castor chairs.
- Put a quality mat at all points of accesses to retain sand, moisture and dirt.
- Never use mats with a rubber or latex bottom, as they may irreversibly stain the floor.
- Never use cleaning products with abrasive agents or solvents, such as acetone.
- Never use wire brushes.
- Avoid wetting the floor.
- Place protective mats in areas around cooking equipment and dishwashers to protect the cork flooring from spills, water, food, drinks, grease and anything else that might cause damage to the floor of your kitchen.
- Ideal and healthy environmental conditions are 35-65% relative humidity at 20°C (68°F).
- When using domestic heating intensively, the humidity of the air indoors may fall to very low levels, causing the surface to dry out excessively.

- As cork is a natural material, this may lead to shrinkage of the tiles, causing the appearance of small joints between them. To avoid this, use a humidifier.
- Remember that mats placed on the floor may act as heat accumulators, which will increase the temperature of the floor surface more than the recommended maximum surface temperature (which should not exceed 20-22°C).
 - Being a natural material, cork tends to lose a little colour when exposed to sunlight. It is important to change the position of rugs and furniture regularly to allow the colour to change evenly.
 - Use curtains, blinds or another sun protection system to minimize this effect.

MAINTENANCE AND CLEANING

Operation	Recommended product
Daily / weekly cleaning	Lobacare Cleaner / Bona Spray Mop / Bona Floor Cleaner
Deep cleaning / removal of maintenance products	Lobacare Remover
Periodic maintenance	Lobacare Floorcare / Bona Polish

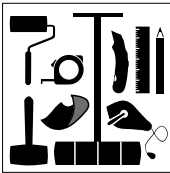
Please read the instructions on the packaging and leaflets for further instructions. Should you have any doubts or questions, please contact us by email: technical.support@sedacor.com

GLUED FLOOR INSTALLATION

INSTALLATION

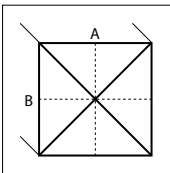
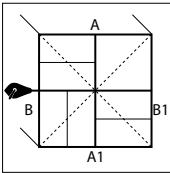
Tools required

Short-pile roller, multipart roller, tape measure, craft knife, pencil, ruler, chalk line, cloth, rubber mallet.



Measurements

- 1. Find the centre of the room using a chalk line from the middle of wall A to the middle of A1. Next, make a line from the middle of wall B to the middle of wall B1. Make sure the intersection of the two lines forms a 90° angle.
- 2. If installation is on the diagonal, make a line using the chalk line at the intersection of lines A and B. The intersection of these lines will form an angle of 45°.
- 3. Verification measurement: check the size of the room by measuring or laying the tiles (without gluing) from the middle. Ensure that the width of the tiles that will be placed along the wall is identical and greater than 5 cm. If necessary, repeat the previous step by drawing a line parallel to the previous one.



RECOMMENDED GLUES

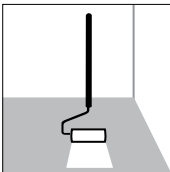
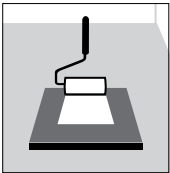
Wakol D-3540

APPLYING THE GLUE

This glue should be applied to the underlay and also to the tiles.

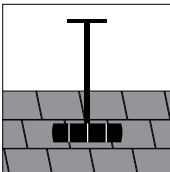
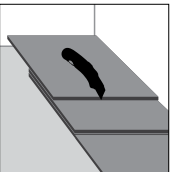
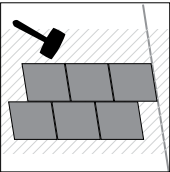
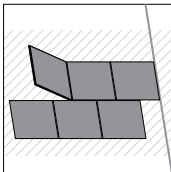
- 1. Mix the glue well before use.
- 2. Apply the glue to the back of the cork tiles with a short-pile roller.
- 3. Apply the glue to the underlay with a short-pile roller. Avoid excess glue.
- 4. Allow the glue to dry completely (after drying, the glue becomes transparent).

Drying time on the subfloor is 40-60 minutes, depending on the temperature and R.H. on site.



APPLICATION

- 1. Install the tiles from the centre along the marked line, preferably using brick-bond pattern.
- 2. Place the tiles side by side without applying much pressure. Use a rubber mallet to affix them.
- 3. Remove any excess adhesive with a damp cloth.
- 4. Cut the tiles along the wall as indicated.
- 5. The installed flooring should be pressed with a 50-kg multipart roller every 30 minutes, and after installation has been completed.



Note: This is an abridged version of the installation instructions for Divina Cork Floors glued and floating floors. Full instructions are available on the product packaging and at www.sedacor.com.

FLOATING INSTALLATION

INSTALLATION

Uniclic® is unique because panels can be installed in two different ways:

Method A - Angled installation method (see diagrams 1A-1B-1C).

Method B - Horizontal installation method (see diagrams 2A-2B).

TOOLS FOR INSTALLATION OF FLOOR

Standard tools for installing floating floors (i.e. mallet, saw, pencil, tape measure).

Installation kit (crowbar, spacers (1-8 mm/0.039"-0318") and Uniclic®/Divina batten), table saw or cross-cut saw.

INSTALLATION OF THE FLOOR

First install a protective barrier against moisture (PE film) and join the rows with tape (see diagram 3A).

Start the first row with an entire panel.

First cut the tongue to the length and width of the panel (see diagram 3B).

Place the panel with the side on which the tongue was cut against the wall.

Put spacers from the installation kit between the panels and the wall (see diagram 3C).

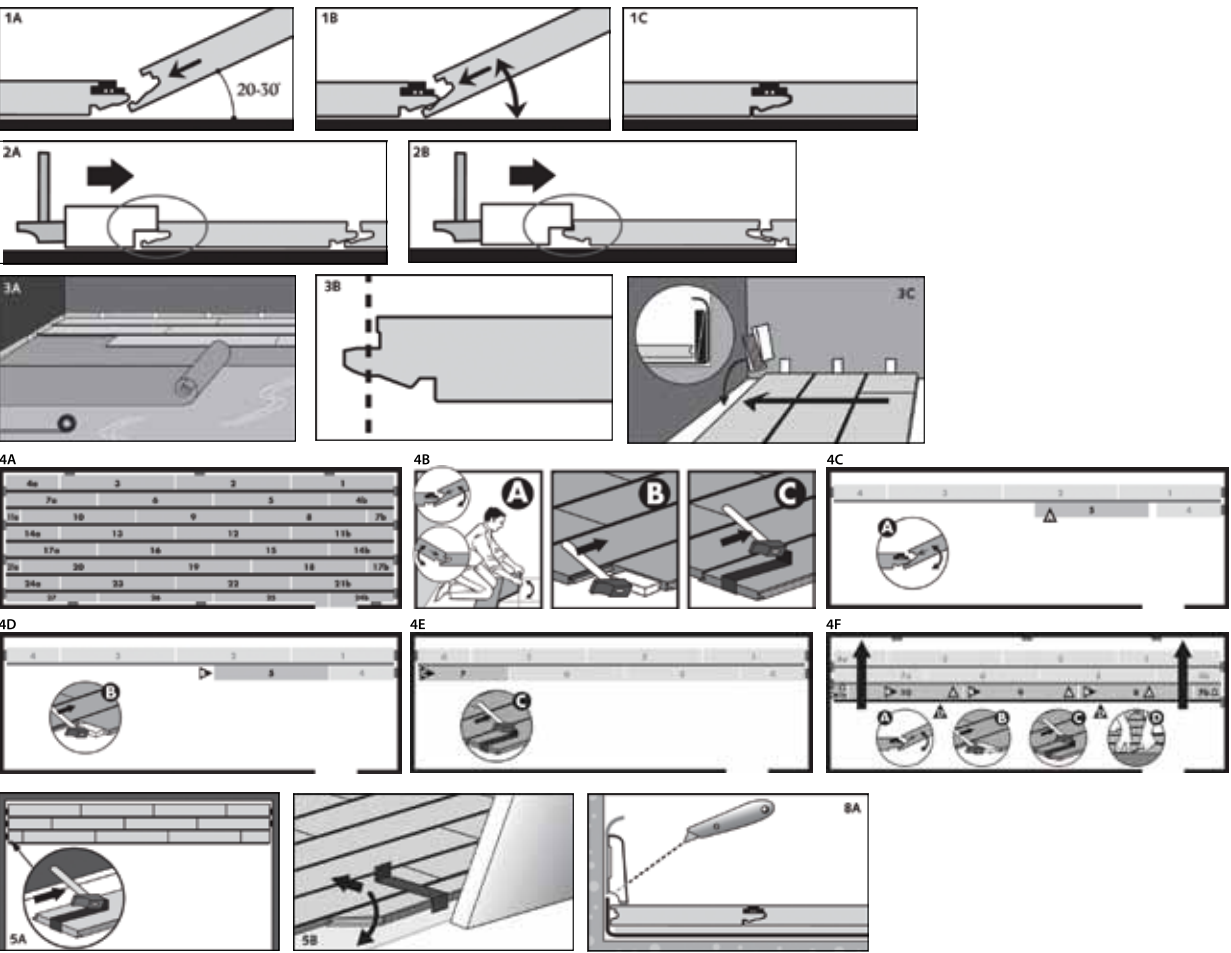
The diagram indicates where the Uniclic® panels are joined using the angle technique or by blows applied to the panels (see diagrams 4A-4F).

In places where it is difficult to install the Uniclic® panels with the batten (e.g. against the wall), you may join them using a crowbar and mallet (see diagrams 5A-5B).

FINISH

Remove the spacers.

Install the skirting on the PE film making a round shape with the wall (see diagram 8A.)



WARRANTY

The name Divina Cork Floors is synonymous with quality cork flooring, thanks to the great attention paid to quality control as well as research and product development. The Divina Cork Floors Warranty ensures that products meet the standards determined by Divina Cork Floors, as well as the industrial quality standards specified for each product line.

DIVINA CORK FLOORS LIFETIME STRUCTURAL WARRANTY

When sold as new by authorized resellers, we guarantee the first end user that their Divina Cork Floors floor is free from defects in materials or workmanship throughout its lifetime.


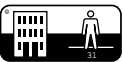

This Divina Cork Floors Lifetime Structural Warranty is limited by the terms and conditions laid down in said Warranty. Please read the terms and conditions to find out full information and limitations of this Divina Cork Floors Warranty.

DIVINA CORK FLOORS LIFETIME WARRANTY FOR THE INTEGRITY OF JOINTS (Floating floors)

We guarantee that the joints will remain secure and the Divina Cork Floors floating floor panels will not become separated.









ADDITIONAL DIVINA CORK FLOORS WARRANTY AGAINST WEAR

As manufacturer of Divina Cork Floors branded products, we guarantee the end consumer that the use layer of this floor will remain in good condition for at least the years from the date of billing the original end user (see table). If, however, any part of the floor becomes worn during the different periods, we shall, at our sole discretion, repair or replace the part in question free of charge.

Class of use (EN ISO 10874)			
Finish	 Intense domestic	 Light commercial	 Intense commercial
Highly resistant finish	15 years	5 years	N/A
Vinyl	25 years	15 years	15 years

This is a summary of the Divina Cork Floors Warranty. To access the full version, please see the product packaging or download it at www.sedacor.com.

TECHNICAL DATASHEET

			Installation method			
			Glued	Floating		
			Series C + Series D	Series C + Series D	Series W	Series V
			Finish			
			High resilience	High resilience	High resilience	Vinyl
Testing - Level of use	Standard	Unit				
Domestic	EN ISO 10874	class	 23	 23	 23	 23
Commercial	EN ISO 10874	class	 31	 31	 31	 33
General properties (EN 14085 + EN 12104)	Standard	Unit				
Dimensions	EN 427	mm	“600x450 ± 0,20% 600x300 ± 0,20% 300x300 ± 0,20%”	1235x300 ± 0,20%	1235x190 ± 0,20%	“1250x225 ± 0,20% 610x470 ± 0,20%”
		Inches	23-5/8x17-23/32x3,78/16 ± 0,20% 23-5/8x11-13/16x3,78/16 ± 0,20% 11-13/16x11-13/16x3,78/16± 0,20%”	48-10/16x8x11-13/16x6,93/16 ± 0,20%	48-10/16x7-8/16x6,93/16 ± 0,20%	49-3/16x8-14/16x6,93/16 ± 0,20% 24x18-8/16x6,93/16 ± 0,20%”
Thickness	EN 428	mm	6 ± 0,15	11 ± 0,15	11 ± 0,15	11 ± 0,15
		Inches	3,78/16	6,93/16	6,93/16	6,93/16
Squareness	EN 427	mm	<0,30	<0,30	<0,30	<0,30
		Inches	0,19/16	0,19/16	0,19/16	0,19/16
Straightness	EN 427	mm	<0,20	<0,20	<0,20	<0,20
		Inches	0,13/16	0,13/16	0,13/16	0,13/16
Apparent density	EN 672	Kg/m³	≥ 700	≥ 700	≥ 700	≥ 900
Dimensional stability	EN 434 / EN 669	%	< 0,20	< 0,15	< 0,15	< 0,15
Tensile testing	ISO 7322	kPa	---	---	---	---
Opening between panels	EN 14085 (Anexo B)	mm	---	≤0,2	≤0,2	≤0,2
Height difference between panels	EN 14085 (Anexo B)	mm	---	≤0,2	≤0,2	≤0,2
“Panel levelling (Length - Concave / Convex)”	EN 14085 (Anexo A)	%	---	≤0,5/≤1,0	≤0,5/≤1,0	≤0,5/≤1,0
“Panel levelling (Width - Concave / Convex)”	EN 14085 (Anexo A)	%	---	≤0,10/≤0,15	≤0,10/≤0,15	≤0,10/≤0,15
Gloss	Glossmeter (60°)	° Gardner	12 ± 3º	12 ± 3º	12 ± 3º	---
Curling	EN 434	mm	≤6	---	---	---
		Inches	≤3,78/16	---	---	---
Safety properties	Standard	Unit				
Reaction to fire	EN 13501-1	Class	Dfl-S1	Dfl-S1	Dfl-S1	Bfl-S1
Slip resistance	EN 13893	Class	DS	DS	DS	DS
Formaldehyde release	DIN EN 717-1	Class	E1 (No formaldehyde added)	E1 (No formaldehyde added)	E1 (No formaldehyde added)	E1 (No formaldehyde added)
Static electrical propensity	EN 1815	kV	<2 (anti-static)	<2 (anti-static)	<2 (anti-static)	<2 (anti-static)
PCP content	CEN TR 14823	mg/Kg	PCP-free	PCP-free	PCP-free	PCP-free
Additional properties	Standard	Unit				
Impact sound reduction	ISO 140-8	dB	15	17	16	16
Step noise	NF S 31 074	dB	75	79	81	86
Thermal resistance	EN 12667	m2.K/W	≤0,150	≤0,150	≤0,150	≤0,150
Thermal conductivity	EN 12667	W/m.K	≤0,100	≤0,100	≤0,100	≤0,100
Wear resistance	EN 660-1	mm	---	---	---	Use Group T (≥0,5)
	EN 14354/EN 660-2	Cycles	9000	9000	8000	---
		g/100 cycles	0,04	0,04	0,04	0,05
Castor chair resistance	EN 425	Effect	no changes to layer	no changes to layer	no changes to layer	no changes to layer
Resistance to furniture leg	EN 424	Effect	no changes to layer	no changes to layer	no changes to layer	no changes to layer
Residual indentation	EN 433	mm	≤0,3	≤0,35	≤0,3	---
Resistance to staining	EN 423	Effect	Grade 0	Grade 0	Grade 0	Grade 0
Lightfastness	ISO 105-B02	Scala	Series C <4 Series D ≥6	Series C <4 Series D ≥6	<4	≥6



SEDACOR

SEDACOR – Sociedade Exportadora de Artigos de Cortiça, Lda.
Av. Monte de Cima, 117 • P.O. Box 42 • 4536-906 Paços de Brandão • PORTUGAL
Tel. +351 22 7470590 • Fax: +351 22 7453322
sedacor@jpscorkgroup.com • www.jpscorkgroup.com



JPSCORK
GROUP

SINCE 1924



A marca de
gestão florestal
responsável

